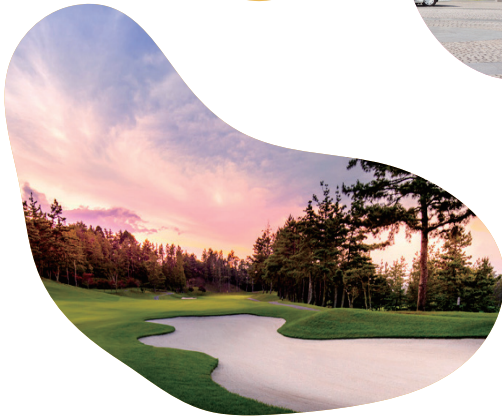


# Shigaraki Model Courses

Tourism Model Courses

Create  
Lasting  
Memories



Discover  
**信楽**  
SHIGARAKI  
JAPAN

<https://www.e-shigaraki.org>



# Contents

## Introduction

Contents	2
Shigaraki - Location in Japan Map	3
Shigaraki Districts Map	4

## Tourist Model Courses

### Access by Train - Day Trips

D1 - Pottery Lover	5
D2 - Art & Culture	6
B1 - Satoyama Biking	7
C1 - Love Tanuki	8
G1 - Golf & Mindfulness	9
DG1 - Full Shigaraki Experience	10

## Creating unforgettable experiences

Creating unforgettable experiences	11
Shigaraki Tourism Content	11
Transportation Methods to reach Shigaraki	12
Travelling Times	12

## Content Directory by District

Miyamachi / Kinose/ Maki Districts - Gateway	13
Chokushi District	13
Tashiro District	14
Nagano District (Main Gallery & Kiln Area)	14 - 15
Eda/Kouyama/ Hosohara Districts	16
Asamiya District	16
Tarao District	16

## Shigaraki Festivals

Shigaraki's Festivals	18
-----------------------	----



# Shigaraki - Japan Location Map

*The historical pottery town of "Shigaraki" is home to Timeless Pottery, Serene Tea Traditions, Scenic Beauty, and World-Class Golf*

- Easy travelling distance from Osaka, Nagoya and Kyoto.
- Travelling time from Kyoto is only 1.5 hrs.
- Discover Shigaraki for deeper experiences and lasting memories.



SHIGARAKI

Kyoto  
Osaka

Tokyo

## ACCESS

### RAIL

- 1 hour from JR Kusatsu Station.
- Change trains at the JR Kusatsu Station on the Jr Biwako Line.
- Take the Shigaraki Kogen Railway to Shigaraki Station.

### BUS

- Take the Teisan Bus from Ishiyama Station via Tagami Garage to Shigaraki Station.

### CAR

- 10 mins from the Shin Meishin Shigaraki I.C
- 30 mins from the Meihan Highway Mibuno I.C

## SHIGARAKI - THE DESTINATION

Shigaraki, a historic kiln area in Japan, boasts a 750-year tradition of producing Shigaraki ware and serves as a destination where tradition meets creativity. Artisans craft a diverse variety of pottery, and visitors can explore vibrant galleries, engage in pottery activities, and enjoy culinary delights in charming cafés. Shigaraki's Asamiya tea plantations, among the very first in Japan dating back to 805 AD, produce "Asamiyacha," considered one of Japan's top five teas.

Once the capital city of Japan, Shigaraki is also famous for its iconic tanuki (raccoon dog) figurines. Alongside pottery galleries, kilns, and workshops, visitors can enjoy the spectacular Miho Museum designed by I.M. Pei (architect of the Louvre), Shigaraki's Toge no Mori Ceramic Cultural Park, and premier golf courses. There are opportunities to play golf and practice mindfulness through pottery making, blending relaxation with cultural immersion.

Access is easy, with Shigaraki just a stone's throw from Kyoto, offering convenient train access for a swift retreat into its rich artistic heritage.

Discover  
**信楽**  
SHIGARAKI  
JAPAN

Follow us to get more information about Shigaraki.



Facebook

Shigaraki Tourism  
Association (official)



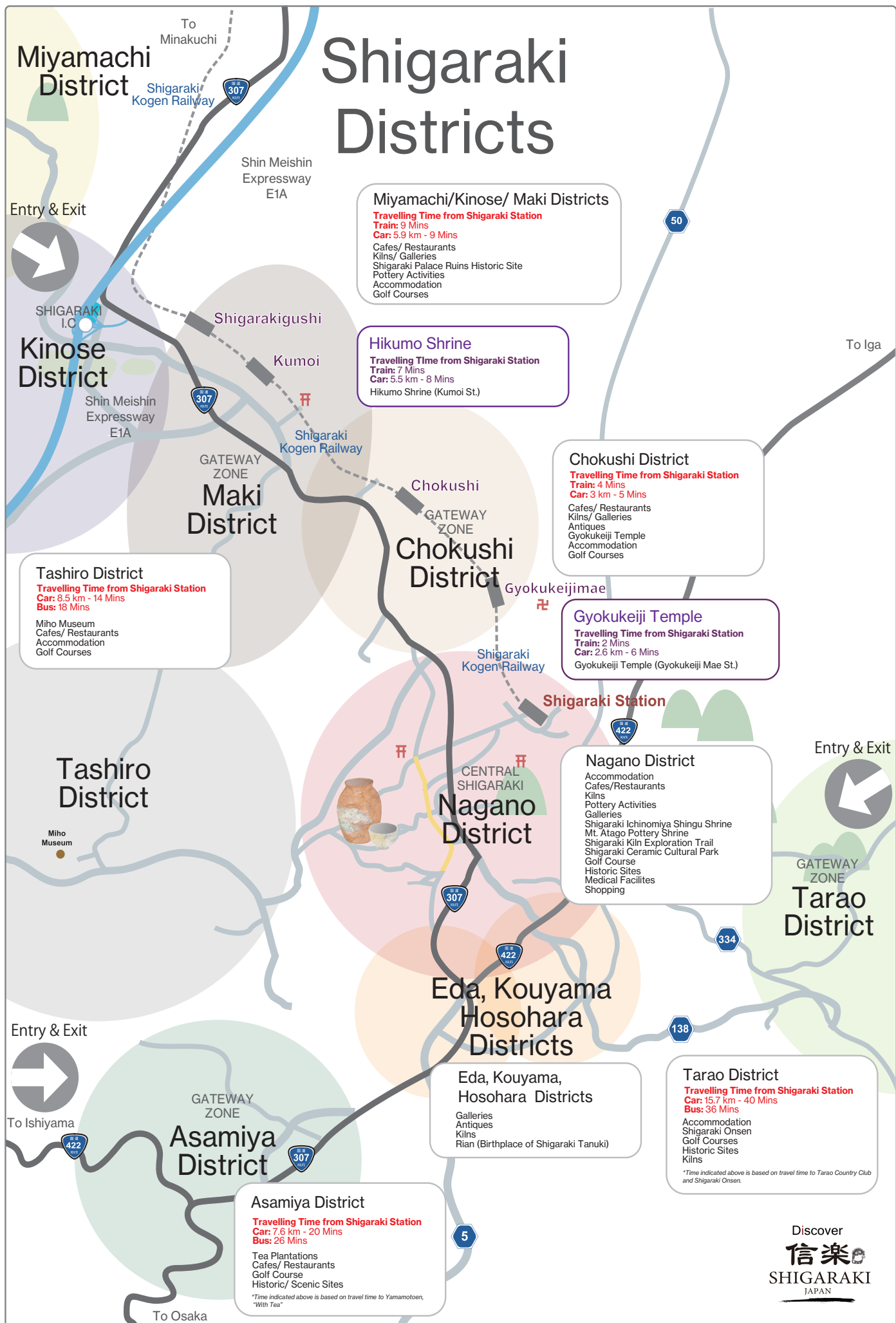
Instagram

SHIGARAKI (official)  
@shigarakitourismassociation



信楽町観光協会  
@shigarakikanko







# Pottery Lover

**Visit:** Shigaraki's Nagano District (Central Pottery Production Area)

**Access:** Scenic Train

**Model:** Day Trip

**Theme:** Pottery Enthusiast, shopping or lesson at a workshop or with a master

D1

Day Trip 日帰り



AM

1.5 hours  
TRAIN

8:05 Depart from Kyoto Station - Use Japan Rail and the scenic Shigaraki Kogen Railway.  
9:38 Arrive in Shigaraki.

5 mins  
Walk

- Visit the "Shigaraki Traditional Craft Centre"  
*Learn about Shigaraki Pottery and gain insights before going deeper on a exploration of the workshops and galleries.*

5 - 10 mins  
Walk

- Visit local galleries of "Shigaraki's Nagano District"

5 - 10 mins  
Walk

- Lunch at a local restaurant/ cafe  
*Select a lunch experience to suit your palate from the options available in Shigaraki's Nagano district.*

PM

5 - 10 mins  
Walk

- Visit the "Shigaraki Ichinomiya Shingu Shrine"  
*Pray to the deities and pick up a lucky tanuki amulet.*

Allow  
5 to 15 mins  
for moving  
between  
locations

- Explore "Shigaraki's Nagano District Kiln Exploration Area".

SUGGESTED KILNS TO VISIT

- Visit "Rakusaigama" *Legendary Kiln.*
- Visit "Eizangama" *Mr Eizan Okuda, a registered treasure of Koka City.*
- Visit "Meizangama - Ogama" *Iconic Noborigama.*
- Visit "Uzangama" *Innovative and modern creations.*

OPTION 1

- Enjoy a "pottery making experience" at a local workshop.

OPTION 2

- Take a pottery lesson with a local artisan.

2 hours  
Pottery  
Experience

5 - 10 mins  
Walk

17:06 Depart Shigaraki Railway Station.

1.5 hours  
TRAIN

18:27 Arrive in Kyoto.



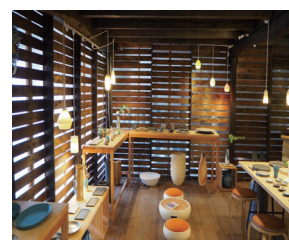
Shigaraki Kogen Railway Scenic Train Journey



Shigaraki Ichinomiya Shingu Shrine



Pottery prepared for firing Uzangama



Kiln exploration zone - creative galleries



Lunch in a local restaurant or cafe



Enjoy a pottery experience at a workshop



Learn from an acclaimed Artisan



Shopping

Pottery Lovers



Train



Contents

Wabi Sabi Version



Train



Contents

Discover  
信楽  
SHIGARAKI  
JAPAN

# Art & Culture

**Visit:** Shigaraki's Tashiro and Nagano Districts.

**Transportation:** Train

**Model:** Day Trip

**Theme:** Pottery enthusiasts, explore Shigaraki ware and embrace the essence of "Wabi Sabi" and Culture

## D2

Day Trip 日帰り



AM

24 mins  
TRAIN

8:05 Depart from Kyoto Station - Use Japan Rail and the scenic Shigaraki Kogen Railway.  
9:38 Arrive in Shigaraki.

Allow for a  
20 min  
TAXI  
ride

Catch a taxi from the Station to Miho Museum.

2 hour  
Museum  
Visit

- Visit the "Miho Museum"  
*Experience stunning architecture and artifacts.*

- Lunch at "Miho Museum"  
*Enjoy local organically grown produce, turned into stunning meals and served on Shigarakiware.*

PM

Allow for a  
20 min  
TAXI  
ride

Catch a taxi to Shigaraki's Nagano area.

Allow  
5 to 15 mins  
for moving  
between  
locations

- Explore "Shigaraki's Nagano District Kiln Exploration Area"

SUGGESTED KILNS TO VISIT

- Visit "Meizangama - Ogama"  
*An iconic local gallery/ cafe and scenic spot.*

OPTION 1

- Experience a Japanese tea Ceremony  
*Experience an authentic Japanese Tea Ceremony at Kochu-an, led by Rakyunyu Honiwa III, a distinguished pottery artisan and esteemed master of tea from Daitokuji. The host regularly conducts tea ceremonies at the renowned Shino Daitoku-ji, ensuring an experience worth attending for the tea alone.*

5-10 mins  
WALK

- Visit the galleries of Shigaraki's Nagano area  
*Visit Galleries located near Shigaraki Railway Station.*

5-10 mins  
WALK

17:06 Depart Shigaraki Railway Station.

1.5 hours  
TRAIN

18:27 Arrive in Kyoto.



Stunning architecture and diverse displays at the renowned Miho Museum



Ogama Noborigama is a iconic landmark in Shigaraki - Lessons, Cafe, Gallery, Boutique Accommodation



Enjoy the ambience and atmosphere of Kochuan

Model Itinerary Route



Train



Contents

Discover  
**信楽**  
SHIGARAKI  
JAPAN

Booking activities and visits to Artisans workshops is recommended for a memorable visit to Shigaraki.



# Satoyama Biking

**Visit:** Shigaraki's Nagano District.

**Transportation:** Train and Rental Cycle

**Model:** Day Trip

**Theme:** Explore the wonders of Shigaraki through cycling

B1

Day Trip 日帰り



AM

24 mins  
TRAIN

8:05 Depart from Kyoto Station - Use Japan Rail  
and the scenic Shigaraki Kogen Railway.  
9:38 Arrive in Shigaraki.

5-10 mins  
Cycling

Rent a cycle at Shigaraki Station.

Allow  
5 to 15 mins  
for moving  
between  
locations

- Explore “Shigaraki's Nagano District Kiln Exploration Area”

See the directory of kilns to visit in the exploration area.

Allow  
30 - 40 mins for  
each  
Kiln visit

- Lunch at a local restaurant/ cafe  
Select a lunch experience to suit your palate from the options for Shigaraki's Nagano district.

PM

15 mins  
Cycling

- Visit Gyokukeiji, one of Shigaraki's most beautiful and culturally significant temples  
Cross the scenic suspension bridge over the Daido river.

5-10 mins  
Cycling

- Visit “Kamamoto Utsuwa”  
Captivating gallery in a stunning thatched roof building.

15 mins  
Cycling

- Visit local galleries in the Nagano District  
Many captivating galleries to browse though.

Allow  
5 to 15 mins  
for moving  
between  
locations

## OPTION 1

- Take a pottery lesson at a local workshop.

## SUGGESTED WORKSHOP TO VISIT

- “Tokusai Toubo”  
Centrally located, variety of experiences.

5-10 mins  
Cycling

Return the rental cycle to Shigaraki Station before 17:00.

1.5 hours  
TRAIN

17:06 Depart Shigaraki Railway Station.

18:27 Arrive in Kyoto.



Discover the stunning scenery of Shigaraki on a rental cycle from Shigaraki Station



Enjoy a delicious lunch at a local cafe - Mutsumian celebrates the best of local produce



Enjoy a lesson in a local workshop

## Model Itinerary Route



Train



Contents

Discover  
**信楽**  
**SHIGARAKI**  
JAPAN

# Kawaii Tanuki

**Visit:** Shigaraki's Nagano and Eda Districts

**Transportation:** Train

**Model:** Day Trip

**Theme:** Tanuki enthusiasts, delve deep into "tanuki love" explore the quirky and "Kawaii" tanuki figurines of Shigaraki, celebrating Japanese culture

C1

Day Trip 日帰り



AM

24 mins  
TRAIN

8:07 Depart from Kyoto Station.

Travel by train to Kusatsu.

8:30 Arrive at Kusatsu Station.

Collect your rental car from a rental car agency near the station.

Allow at least 20 mins for rental car collection.

35 mins  
CAR

Allow  
5 to 15 mins  
for moving  
between  
locations

Travel via the Expressway to Shigaraki. E1A

- Visit "Tanukiya Rian"

The actual birthplace of the Tanuki figurines that decorate the streets of Shigaraki and homes all over Japan.

- Visit local galleries in the Nagano District

Many captivating galleries to browse through.

5-10 mins  
Drive

5-10 mins  
Drive

PM

5-10 mins  
Drive

- Lunch at "Tanukiya Bunpuku"

Enjoy delicious udon served in tanuki bowls inside the biggest sleeping tanuki you can imagine. The entire restaurant is a huge tanuki!

- Explore "Shigaraki's Nagano District Kiln Exploration Area"

SUGGESTED KILNS TO VISIT

- Visit "Okuda Marutaka Seito" Tanuki specialist.

Allow  
30 - 40 mins for  
each  
Kiln visit

SUGGESTED WORKSHOP TO VISIT

- "Shigaraki Togei Mura"

Make your own tanuki in a pottery workshop.

2 hour  
Pottery  
Experience

Same  
Location,  
There is no  
need to move

- Enjoy a tea break at "Noborigama Cafe"

Enjoy tea time at the Noborigama Cafe (Climbing Kiln), and get some photos of the cutest Tanuki cookie decorations on your cake.

35 mins  
CAR

17:00 Depart from Shigaraki via the Shin Meishin Expressway for Kusatsu.

18:30 Arrive at Kyoto Hotel

Return rental car to rental car company near Kusatsu Station.

18:42 Catch train from Kusatsu to Kyoto.

24 mins  
TRAIN

19:06 Arrive in Kyoto.



Tanukiya Rian - Birthplace of Tanuki



Shigaraki Ichinomiya Shingu Shrine



Lunch inside huge tanuki, delicious udon served in tanuki themed bowls



Enjoy pottery experiences



Cafe Time



Visit a tanuki specialist



Shopping

By Train



Train



Contents

Model Itinerary Route



Train



Contents

Discover  
信楽  
SHIGARAKI  
JAPAN

Booking activities and visits to Artisans workshops is recommended for a memorable visit to Shigaraki.



# Golf and Mindfulness

**Visit:** Shigaraki's Kumoi, Chokushi, Nagano and Asamiya areas

**Transportation:** Train and Rental Car

**Model:** Day Trip

**Theme:** Pottery enthusiasts, explore the kilns any tea plantations of the area

G1

Stay 一泊2日



AM

24 mins

TRAIN



8:07

Depart from Kyoto Station.

*Travel by train to Kusatsu.*

8:30

Arrive at Kusatsu Station.

*Collect your rental car from a rental car agency near the station.*

*Allow at least 20 mins for rental car collection.*

35 mins

CAR



Travel via the Shin Meishin Expressway. EA1

- Arrive at Shigaraki's "Rose Golf Club" and enjoy a round of golf

*Located close to the center of Shigaraki, Rose Golf Club features art installations and its own craft beer brewery.*

- Enjoy lunch at "Rose Golf Club"

*After Lunch continue your game.*

- Stay at "Rose Village Cottages"

*Modern Self Contained Accommodation, with views over the golf course and the mountains surrounding Shigaraki.*

- Enjoy a Chef prepared BBQ Dinner on the deck at your cottage

*Outdoor dining and entertainment decks in front of each cottage, with views over Shigaraki.*

Day 2  
AM

5-10 mins  
Drive

5-10 mins  
Drive

Allow  
30-40 mins for  
each  
Kiln visit

5-10 mins  
Drive

PM

1 hour  
Pottery  
Experience

Enjoy Breakfast at your accommodation.

- Visit the "Shigaraki Ichinomiya Shingu Shrine"

*Pray to the deities and pick up a lucky tanuki amulet.*

- Explore "Shigaraki's Nagano District Kiln Exploration Area"

SUGGESTED KILNS TO VISIT

- Visit "Toubo Jun" Figurines and exquisite jewelry.
- Visit "Miharugama" Keeping traditions alive.

- Enjoy lunch at "Gallery and Cafe Touen"

*Enjoy the timeless feel of a local Japanese Cafe.*

OPTION 1

- Pottery lesson at "Ogawa Kenzo Toubo"

*Learn from a master in a traditional workshop.*

15 mins  
Drive

- Visit "Tokoubo Shinohara"

*Visit Mr. Nozomu Shinohara, a local artisan known for his inspiring woodfired pottery teaware and tableware.*

35 mins

CAR



17:30

Depart from Shigaraki

*Travel via the expressway.*

18:03

Arrive at Kusatsu Railway Station.

*Return rental car to rental car company near Kusatsu Station.*

24 mins

TRAIN



18:42

Catch train from Kusatsu to Kyoto.

19:06

Arrive in Kyoto.



Enjoy a fast paced game of golf on one of Shigaraki's stunning golf courses



Follow the global trend of mindfulness through pottery making with a local master

Model Itinerary Route



Train



Day 1



Day 2

Discover  
信楽  
SHIGARAKI  
JAPAN

# Experience all of Shigaraki

**Visit:** Shigaraki's Kumoi, Asamiya, Nagano, Maki areas

**Transportation:** Chartered Coach - Scenic Train excursion

**Model:** Day Trip

**Theme:** Discover "Shigaraki" - one of Japan's pioneering pottery heritage areas

DG1

Day GROUP 日帰り



AM



45 mins BUS

8:15 Depart from Kyoto Accommodation.

*Travel via the Shin Meishin Expressway, EA1*

9:00 Arrive at "Shigarakigushi Station"

## Highly Recommended Fun Option

9:29 Ride the Shigaraki Kogen Railway Train

*Board the Shigaraki Kogen Railway Train bound for "Shigaraki Station" at "Shigarakigushi Station".*



10 mins

TRAIN

9:38 • Arrive at Shigaraki Station

*"Shigaraki Station" is the final stop of the scenic Shigaraki Kogen Railway, the train carriages are themed and everyone is welcomed at the station by many tanuki figurines. Take a photo with the huge tanuki.*

20 mins  
Bus

• Visit Yamamotoen Tea Plantation in Asamiya

*Visit the esteemed Yamamotoen Tea Plantation in Asamiya, where you can explore the lush tea fields and learn about the intricate process of tea production unique to Asamiya.*

20 mins  
Bus

• Enjoy lunch at "Oogoya" cafe

*Enjoy a lunch made from local ingredients at "Oogoya", one of Shigaraki's long established kilns.*

PM

5 mins  
Bus

• Pottery experience at "Shigaraki Togeji Mura"

*Visit Shigaraki Togeji Mura and see a historic Noborigama and participate in a pottery experience.*

1 hour  
Pottery  
Experience

5 mins  
Bus

• Visit "Shigaraki Ceramic Cultural Park"

*Visit "Shigaraki Togeji no Mori" and enjoy exploring the exhibitions and displays by local artists.*

20 mins  
Bus

2 hours  
Museum  
Visit

## OPTION 1

• Visit the stunning "Miho Museum"

*Visit Miho Museum and experience the stunning artefacts.*



1.5 hours BUS

17:00 Depart from Shigaraki via the Shin Meishin Expressway.

18:30 Arrive at Kyoto Hotel



Visit the picturesque tea plantations of Yamamotoen



Enjoy lunch in a stylish cafe environment, then enjoy the shopping and pottery displays



Enjoy a lesson at Shigaraki Togeji Mura's pottery workshop

## Model Itinerary Route



Ceramic Park



Miho Museum

Discover  
**信楽**  
SHIGARAKI  
JAPAN

Booking activities and visits to Artisans workshops is recommended for a memorable visit to Shigaraki.



# Creating unforgettable experiences

Shigaraki, renowned for its rich pottery traditions and captivating cultural heritage, offers a plethora of attractions that can seamlessly fit into any travel itinerary. To aid travel agents and planners in crafting the perfect visit to this enchanting town, the Shigaraki Tourism Association has developed a series of model courses. These courses, categorized into day trips and themed experiences, ensure visitors have an immersive experience in Shigaraki, helping travel professionals uncover its essence as a compelling addition to any visit to Japan.

When creating an itinerary to visit Shigaraki, considering the following will help to create a smooth flowing and memorable experience.

## 1. Extensive content

➔ **Pottery and Ceramics** - As one of Japan's designated six ancient kiln areas, Shigaraki's pottery and ceramic production sector is a major draw for visitors.

- Shops and Galleries - Numerous shops and galleries showcase and sell Shigaraki pottery.
- Activity Providers - Hands-on pottery-making experiences are available for visitors.
- Artisans' Ateliers - Explore the workshops where artisans craft their pieces. Also have the opportunity to learn pottery making from bonified artisans.
- Commercial Factories - Witness large-scale production processes.
- Educational Facilities and Museums - Learn about the history and techniques of Shigaraki pottery. These facets can be selected to create engaging and unforgettable itineraries.

➔ **Tea Growing** - Asamiya, is one of Japan's oldest tea-growing regions, "Asamiyacha" is one of Japan's top five teas, visitors can take tours throughout the year to see and learn about tea processing.

- Organic Pioneers - Visit plantations that produce organically grown teas as well as plantations that make and sell delicious cakes and dairy treats made with tea.

➔ **Arts** - Shigaraki is a vibrant hub for art enthusiasts, offering a diverse array of experiences that celebrate both tradition and innovation.

- The Shigaraki Ceramic Cultural Park - is a multi-functional facility, there is a "Museum and Exhibition Centre" featuring displays and exhibits on ceramics. A "Training and Educational Facility", that offers educational programs and workshops and a "Sculptural Arts Centre" and "Artisans Event Arena", which hosts various events throughout the year, showcasing the talents of regional artisans.
- Miho Museum - Features stunning architecture by I.M. Pei and houses significant cultural artifacts in both permanent and rotating displays.

➔ **Culture** - Shigaraki pottery is deeply connected to Japan's tea culture and the philosophy of "Wabi Sabi," the appreciation of imperfection and transience, reflected in many aspects of Shigaraki.

- Tea Ceremony and Flower Arranging - Participate in these traditional arts, integral to the region. The tea ceremony in particular embodies Wabi Sabi, emphasizing the beauty of simplicity, natural materials, and the fleeting nature of the moment. Flower arranging (Ikebana) also reflects Wabi Sabi principles through asymmetrical arrangements and seasonal flowers.
- Shrines and Temples - Visit places like the Shigaraki Ichinomiya Shingu Shrine, where you can pay respects to the gods and seek blessings for your pottery creations. Unique charms available at the shrine add to the experience, enhancing the connection between spiritual practice and the creation of art. The worn structures and natural surroundings of the shrines exemplify Wabi Sabi's appreciation for the aged and imperfect.
- Historic Sites - Explore the archaeological site of the former Shigaraki Palace, once the capital of Japan. The ruins and remnants of this historic site offer a tangible connection to the past, highlighting the Wabi Sabi acceptance of change and the passage of time.

➔ **Food** - Shigaraki is renowned for its culinary delights and is a key element and major supporter of all of the activities that can be enjoyed in the area.

- Matsutake Mushrooms - Experience foraging and dining on these prized mushrooms.
- Omi Beef - One of Japan's top 3 brand beefs, enjoy this famous beef at local restaurants.
- Local Rice and produce - Savor and purchase locally grown rice and produce. Many of the farmers in Shigaraki are growing produce organically. There is even opportunities to enjoy rice that has been grown using natural farming methods within the historic former "Shigaraki Palace" grounds. This rice, which is also sent to the Imperial household, can be enjoyed in select local restaurants, adding a unique and prestigious element to the dining experience.

➔ **Golf** - Koka City ranks third in Japan for the number of golf courses, with a total of 11 located in Shigaraki alone. Notably, Shigaraki is set to host the 91st Japan Open Golf Championship in 2026.

- Golf and Mindfulness - Engage in fast paced, high-concentration game of golf amidst Shigaraki's natural landscapes, then in the same visit transition to pottery making, recently globally celebrated as a practice to encourage mindfulness and creativity. Pottery making settles the mind through creation using natural elements of earth, water, and fire.

## 2. Transportation Options for Exploring Shigaraki

Your choice of transportation greatly influences the places you can easily visit in Shigaraki:

➔ **By Chartered Limousine or Rental Car**

### Advantages:

- Maximum freedom to explore all areas, including outlying regions
- Flexibility to create your own itinerary

➔ **By Coach Service**

### Advantages:

- Can visit many areas around Shigaraki

### Considerations:

- Need to check where the coach can stop.
- Capacity limitations at kilns and workshops.

➔ **By Train**

### Advantages:

- Ideal for visiting Central Nagano District.
- Convenient for trips with time constraints.

### Best for:

- Short visits focused on a variety of attractions in a compact area.

➔ **Combining Train and Taxi Services**

### Advantages:

- Access to more remote areas with a combination of train and taxi.

### Destinations:

- **Asamiya District:** Tea plantations.
- **Tashiro District:** Miho Museum.
- **Gateway areas between Central Nagano District and the motorway interchange.**

### 3. Travelling times in Shigaraki

#### General Information

Travel times vary depending on:

- Weekday vs. weekend.
- Presence of popular events (e.g., pottery events or festivals).

#### During Events

- Route 307: Main access route from the Shin Meishin Expressway E1A.
- Traffic conditions: Can be quite slow due to heavy traffic.
- Advice: Park at Shigarakigushi Station and use the Shigaraki Kogen Railway to reach the central Nagano area.

#### Normal Travel Times

From Expressway to Shigaraki's Central Nagano District.

- **By car:** 10 to 15 minutes.

From Shigaraki's Central Nagano to Key Districts.

- **Miho Museum (Tashiro District):** 20 minutes by car.
- **Golf Courses (Tashiro District):** 15 minutes by car.
- **Tea Plantations (Asamiya District):** 20 to 30 minutes by car.
- **Heritage Sites and Golf Courses (Tarao District):** 20 to 30 minutes by car.

Within Central Nagano District

- **Distance between various kilns and pottery workshops:** 5 to 10 minutes on foot.

★ Please note travelling times are a indication only and are subject to road and weather conditions.

### 4. Content Directory

**Content Directory** - A comprehensive content directory has been compiled, and is located after the themed model courses in this guide. The Shigaraki Tourism Association hopes that the Model Courses and the Content Directory assist in planning a unforgettable and meaningful visit to Shigaraki.

- **District-Based Selection:** Content is organized by district and can be swapped with similar content from the same district.
- **Customizable Itineraries:** You can remove content from the itinerary to spend extra time at locations that better meet your needs.
- **Availability:** All content is subject to availability, and bookings are essential, some locations may not accommodate groups.

#### Course Suitability

- The model courses reflect content suitable for the chosen theme, group size, and access type.
- Designed to provide a starting point for memorable, efficient, and effective visits to Shigaraki.

#### Additional Artisans and Galleries

- Beyond the listed content, many individual artisans display their work in various galleries around the area.
- Note that many artisans do not have open workshops.

#### Planning Your Visit

- **Advance Notice:** For activity and meal-related content, it is recommended to call in advance to confirm your visit, as operating days may change.
- **Language Assistance:** Some businesses and workshops do not speak English. If you encounter language difficulties, consult the Shigaraki Tourism Association.



Ogawa Kenzo Toubo



Kamamoto Utsuwa



# Content Directory by District

※ Businesses are not listed in any particular order



## Miyamachi / Kinose/ Maki District - Gateway

### Galleries

- Shigaraki Touen Tanuki Mura - Large tourist orientated facility, with large selection of pottery.
- Temahima Utsuwa - Artisan's Atelier and Gallery, excellent gallery for experiencing "wabi sabi".
- Kumoi Gama Fujimoto Hide - Traditional Shigarakiware - workshops and gallery space, forest location.
- Kumoi Gama - One of Shigaraki's iconic kilns, gallery and shop.
- Gallery Yuraku - Local Artists exhibitions and selection of locally produced pottery.

<https://tanukimura.com/>  
<http://temahimautuwa.com/>  
<https://www.fujimotoyama.com/>  
<https://www.kumogama.co.jp/shop/>  
<http://www.shigaraki-uraku.com/>

### Pottery Activities

- Shigaraki Touen Tanuki Mura - Potters Wheel, Tanuki Figurine Making, Ceramic Painting. Groups OK.
- Shigaraki Togeji Mura Kokudo Ten - Potters Wheel, Hand Building, Tanuki figurine making. Groups OK.
- Kumoi Gama Fujimoto Hide - Traditional Shigarakiware - workshops and gallery space, forest location.
- Gallery Ensou - Potters Wheel, Creative pottery experience.

<https://tanukimura.com/>  
<http://tougimura.jp/>  
<https://www.fujimotoyama.com/>  
[https://www.instagram.com/gallery\\_ensou/?hl=ja](https://www.instagram.com/gallery_ensou/?hl=ja)

### Other Activities

- Shiga Safari Museum - Permanent exhibition of taxidermied specimens of wildlife from around the world.

<http://shiga-safari.com/>

### Cafe/Restaurants

- Pine Cone - Juicy Omi Beef Hamburgers, diner feeling, indoor outdoor dining.
- Chatoran - Popular local restaurant in a beautifully restored thatched roof kominka.
- Enso - Popular local cafe famed for its delicious tarts.
- Uomatsu Shigaraki - Sukiyaki, Shabu Shabu and Matsutake - All you can eat, Groups OK.
- Alo - Popular local cafe celebrating the best of local produce, flavors inspired by Chinese cuisine. FIT Only.
- Aokuma Cafe - Spectacular riverside location - cute and instagramable dessert treats.
- Gindawara - Popular local restaurant serving delicious meals, focusing on local produce.
- Yakiniku Manda - Popular local yakiniku restaurant - enjoy delicious Omi beef. Groups OK.
- Lamancha - Popular roadside restaurant with daily special lunches, Paella specialists. FIT Only.
- Shigaraki Togeji Mura Kokudoten - Lunches featuring the best of local produce and "Shigaraki Palace" rice.
- Uoki - Variety of popular Japanese menu items and delicious "Eel".
- Hutte Chukichi yama - Local Shigaraki "Matsutake and Beef Sukiyaki" specialist. For the "gourmet" client, harvesting your own fresh "Matsutake mushrooms", during the harvest season adds to the experience.

<https://pinecone-shigaraki.com/index.html>  
[https://www.instagram.com/\\_chatoran/](https://www.instagram.com/_chatoran/)  
<https://www.kashogama.com/ensou/>  
<http://www.uomatsu.co.jp/menu.html>  
[https://www.instagram.com/alo\\_shigaraki/](https://www.instagram.com/alo_shigaraki/)  
<https://tanukimura.com/aokuma/>  
<https://gindawara.co.jp/pages/brownrice>  
<https://www.yakinikumanda.com/>  
<https://shigaraki-lamancha.com/>  
<http://tougimura.jp>  
No website

<https://www.cyu-kichi.com/>

### Historic Site

- Former Shigaraki Palace Archaeological Site - The grounds of the former Shigaraki Palace, capital of Japan.

<https://shigaraki-fun.com/shigarakigushi>

### Shrine

- Higumo Jinija - One of few Shrines in all of Japan where the train runs though the grounds. Culturally important.

<https://ur0.jp/aAShH>

### Accommodation

- Irorina - Quaint lodge style accomodation located in a beautiful forested location. Forest immersion stay.
- Mix Nature - Camp Field - Camping and outdoor.
- Guest House Shigaraki Villa - Modern guest house.

<https://irorina1017.amebaownd.com/>  
<https://mixnature.hp.peraichi.com/>  
<http://www.uomatsu.co.jp/shigarakivilla.html>

### Golf Courses

- Orange Shiga Country Club

<https://orange-shiga.co.jp/>



## Chokushi District - Gateway

### Galleries

- Kamamoto Utsuwa - Traditional thatched roof gallery, extensive stock and Pottery Artisan owner.
- Utsuwa no Shigoto - Trendy gallery space in repurposed car mechanics workshop, open Sunday only.
- Oogoya - A large scale store featuring a wide variety of works.
- Kabushiki Gaisha Tōri (Wholesaler) - Ceramic wholesaler and importer.
- Nota & Design - Art, Pottery and Flowers - Exhibitions.
- Kaneman Touki - Large pottery items, wash basins, bathtubs and more.
- Tao Living Design - Pottery for interiors showroom.
- Marutaka Touki - Large pottery showroom.
- Bunpuku Tonchinkan - Pottery shop and Gallery.

<http://www.kamamoto-utsuwa.co.jp/>  
[https://www.instagram.com/utsuwa\\_no\\_shigoto/](https://www.instagram.com/utsuwa_no_shigoto/)  
<http://www.oogoya.co.jp>  
No website  
<https://nota-and.com/>  
<https://www.shigarakiyaki.jp/>  
<https://www.instagram.com/tao0748>  
<https://marutaka-touki.com/>  
<https://www.bunpuku-tonchinkan.com/>

### Pottery Activities

- Sawazen - Hand Building, Ceramic Painting, Tanuki Figurine Making. Groups OK.
- Bunpuku Taonchinkan - Pottery Wheel, Hand Building, Ceramic Painting lessons.
- Oogoya - Pottery Wheel, Hand Building, Ceramic Painting Lessons, Pet Friendly.
- Yuki Tōsha (Marutaka Touki) - Pottery Wheel, Hand Building.
- Marutaka Touki - Potters Wheel, Hand building, Ceramic painting, Tanuki figurine making, Groups OK.

No website  
<https://www.bunpuku-tonchinkan.com/tougei.html>  
<http://www.oogoya.co.jp/>  
<https://marutaka-touki.com/>  
<https://marutaka-touki.com/>

### Cafe/Restaurants/ Bakeries

- Coffee World - Coffee, bread, light meals, and set meals.
- Coyomi - Boutique bakery famed for its "Cream Pan", "Curry Pan", "Anpan".
- Tao Cafe - Cafe space for relaxation inside Tao Living Space Showroom.
- Bunpuku Udon - Delicious udon in convenient location.
- Oogoya - Spacious cafe and bakery featuring delicious handmade meals using local produce.

<https://pinecone-shigaraki.com/index.html>  
<https://www.instagram.com/bakerycoyomi/>  
<https://www.instagram.com/tao0748/>  
<https://www.bunpuku-tonchinkan.com/>  
<http://www.oogoya.co.jp/>

- Jyuwari SobaYa Shinonome - *Stunning Traditional Architecture, Luxurious Japanese Soba Restaurant.*
- Rose Golf Course Restaurant - *Wide variety of meals and Brewery. BBQ Meals, Cafe.*
- Gingetsusha - *Delightful cafe inside the Shigaraki Ceramic Cultural Park, Organic and Local Ingredients.*

<http://www.oogoya.co.jp/>  
<https://www.rose-golfclub.com/restaurant.html>  
<https://gindawara.co.jp/pages/gingetsusha>

#### Museum and Exhibition Area

- Shigaraki Ceramic Cultural Park - *Togei no Mori - Prefectural Ceramic Museum, Exhibition Hall, Shop.*

<https://www.sccp.jp/e/>

#### Golf Course

- Shigaraki Rose Golf Course
- The Country Club

<https://www.rose-golfclub.com/restaurant.html>  
<https://rttg-golf.jp/thecc>



## Tashiro District - Gateway

#### Museum

- Miho Museum - *Stunning location with architecture by I.M. Pei, culturally significant exhibitions.*

<https://www.miho.jp/>

#### Cafe/Restaurants

- Handmade Soba Gen'an Nobu - *Soba Restaurant near the entrance to the Miho Museum.*
- Miho Museum - Peach Valley Restaurant - *Featuring nutritious organically grown local produce.*
- Miho Museum - Pine View - *Perfect place for refreshment when visiting Miho Museum.*

<https://tabelog.com/shiga/A2502/A250201/25010279/>  
<https://www.miho.jp/en/restaurant/>  
<https://www.miho.jp/en/cafe/>

#### Golf Courses

- Maple Hills Golf Club
- Shigaraki Country Tashiro Course
- Shigaraki Country Sugiyama Course

<https://maple-hills.com/>  
<https://www.shigarakicc.jp/tashiro/>  
<https://www.shigarakicc.jp/sugiyama/>

#### Accommodation

- Shigaraki Kogen Hotel - *Located in the grounds of the Shigaraki Country Sugiyama Course.*

<https://www.shigarakicc.jp/tashiro/>



## Nagano District - Gallery and Kiln District of Shigaraki

#### Nagano Area Galleries

- Rengetsu - *A long family tradition of pottery-making dating back to the Edo period.*
- Shigaraki Share Studio - *A creative co-working space with a focus on pottery and art.*
- Kogen no Utsuwa Fujitou - *A wide range of pottery, from artisanal pieces to commercial-grade tableware.*
- Kotani Co.Ltd - *Allures customers with its an extensive array of products.*
- Noborigama Soutoen Kiln - *Hand crafted, unique and intriguing pottery. Products, are fired in the on site.*
- Utsuwa no Shigoto - *Specialists in functional tableware, taking inspiration from plants.*
- Tsuchinoko Gama Minakawa Toubo - *Handmade pottery, tableware, vases, teaware, natural glazes.*
- Yamakane Touki Ltd - *Specialists in garden pottery, bonsai pots.*
- Otani Touki - *Comprehensive selection of traditional Shigarakiware.*
- Gallery Kohara - *Works by Yojiro Kohara and solo exhibitions by local artisans.*
- Gallery Kogen - *Conveniently located gallery inside Shigaraki Kogen Railway Station.*
- Yamatate Seitojo - *A large selection of Shigaraki produced pottery sold in store.*
- Kama-to no Mori - *Manufacturer of Japan's "Plus Garden" brand, extensive giftware store.*
- Cokoro no Tsue L-Born Co.,Ltd - *Ceramic items created as memorials to family members that have passed.*
- Shigaraki Marumoto Pottery Co.,Ltd - *Creating large pieces to small items, as well as tours of pottery kilns.*
- Marui Seito Hechimon Shop - *Offer a wide range of products and their own brand "Hechimon".*
- Tsujikyu Pottery Co.,Ltd - *Extensive selection of hand selected pottery.*
- Kabushiki Gaisha Maruta Touki - *Diverse selection of pottery. Local artists gallery.*
- Minorugama - *Gallery dedicated to vases and hand crafted pottery.*
- Kaneu Touki - *Wide range of items, from unique and handpicked pieces to the finest quality ceramics.*
- Nakamura Touki - *Tableware and flower vases and garden pottery, tanuki figurines and tea ceremony experiences.*
- Shigaraki Togei Mura - *Heritage listed noborigama, gallery, lessons, cafe, suitable for group.*
- Tanuki no Sato Matsumoto Touki - *A wide range of Shigaraki ware. Collection exceeding 30,000 items.*
- Yamasho Touki Kabushiki Gaisha - *A range of interior decor, tableware, small items, and original products.*
- Marutoku Touki Tokusai Toubo - *Wide selection of products good for special tableware.*
- Tani Kan Gallery - *Located near Shigaraki Station. Good selection of homeware.*
- Bunpuku Co., Ltd. Tanukiya Bunpuku - *Gallery Restaurant and pottery workshop, all inside huge tanuki.*
- Touki Maruichi Shoten - *Large pottery shop and distributor near Shigaraki station.*

<https://rengetsu.co.jp/>  
<https://sss-shigaraki.com>  
<https://fujito-utsuwa.com/>  
<http://www.kotani-to-ki.com/>  
<http://www.shigarakiyaki.co.jp/>  
[@utsuwa\\_no\\_shigoto](mailto:utsuwa_no_shigoto)  
<http://www.eonet.ne.jp/~tsuchinoko/>  
<https://chinaware-store-203.business.site/>  
<http://www.otanitoki.jp/>  
No website  
No website  
No website  
<https://www.kama-to.jp/>  
<https://www.cocoro-tue.com/>  
<http://www.shigaraki-marumoto.jp/>  
<https://www.hechimon.com/>  
No website  
<https://www.marutatouki.com/>  
<https://minorugama.com/>  
<http://www.kaneu.jp/>  
<https://www.nakamura-touki.jp/>  
<https://tougimura.jp/>  
<https://www.yamajyou.com/>  
<http://www.yamasho-touki.co.jp/>  
<http://www.tokusai.jp>  
No website  
<https://www.bunpuku-tonchinkan.com/>  
<https://www.yakimono.co.jp/>

#### Shigaraki Nagano - Galleries and Workshops in the Kiln Exploration Zone

- Takahashi Rakusai Gama - *One of Shigaraki's iconic kiln workshops and galleries. Special experience.*
- Meizangama Ogama - *An integral part of the Kiln exploration trail, located on the "Rokuro Slope"*
- Uzan Gama - *Modern Gallery space, tableware and garden ware, translucent pottery lighting stunning.*
- Shimakichi Toubo - *Original pottery, handmade craftsmanship, with a focus on everyday tableware.*
- Shikuya Seitoshou - *Specializes in producing frogs and has done so for two generations.*
- Tsubo Bun - *Stunning gallery, tableware and pottery baths and more.*
- Marumasa Seito Sho - *Emphasis flower vases created using "Tatara forming techniques".*
- Tsubokuro Toubo x Lily of the Valley - *Creations express the unique depth and serenity of Goshu. (a Buddhist deity)*
- Toranosu - *Gallery located in the residential area of Shigaraki. Primarily exhibit and sell "naotora" tableware.*
- Okuda Marutaka Seito - *Specialising in the creation of creative animal figurines, primarily tanuki.*
- Yamakane Seitoshou & Tohbo Jun - *Crafts exquisite ikebana vessels, figurines and acclaimed pottery jewellery.*

<https://www.takahashirakusai.com/>  
<http://www.meizan.info/ogama>  
<https://uzan.jp/>  
No website  
<https://shikuya.com/>  
<http://www.bungoro.com/>  
No website  
<https://www.ac-koka.jp/~mth08701/>  
<https://toranosu.com/>  
No website  
<http://www.tohbo-jun.jp/>



- Ogawa Kenzo Toubou - *Keeping Shigaraki` s traditions alive. Gallery in a stunning loctation.*
- Tani Kan Gama and Gallery Houzan - *Upholds the age-old legacy of Shigaraki ceramics, extensive gallery.*
- Masumi Gama - *Specializes in crafting everyday tableware, that is visually delightful and enjoyable to use.*
- Matsusho - *Shiro-iro-ie - Contemporary tableware with warm earthen tones.*
- Churokuen - *Vases, flower vases, tableware, and more.*
- Naka Koubo - *Earthenware pots, heat-resistant utensils, tableware, flower vases, sake vessels, and more.*
- Okuda Eizan Gama - *Gallery, Tea ceremony experiences and lessons.*
- Miharu Gama - *One of Shigaraki's must visit kiln workshops and gallry spaces.*
- Marushi Seito Co.,Ltd - *Ceramics for modern living, large scale operation, shrowroom.*
- Yasuo Toubou - *Yasuo Gallery is operated by 5th generation owners.*
- Tsubohachigama Daiki no Utsuwa - *Artisans workshop and gallery, garden items, fountains, teapots etc.*

#### Pottery Activities

- Maru ri Gama - *Potters Wheel, Hand Building.*
- Ogama - *Hand building, tatara forming, ceramic painting, hand print impressions, childrens classes.*
- Miharu Gama - *Pottery Wheel, Hand Building.*
- Shigaraki Togetei Mura - *Potters Wheel, Hand Building, Tanuki figurine making. Groups OK.*
- Challenge - *Pottery Wheel, Hand Building.*
- Marutoku Touki - *Tokusai Toubou - Pottery Wheel, Hand Building.*
- Shigaraki Kenzo Tougei Club - *Pottery Wheel, Hand Building. Groups up to 20 people OK.*
- Minoru Gama - *Pottery Wheel, Hand Building.*
- Noborigama Soutoen - *Potters Wheel, Hand Building, Tanuki Making, Ceramic Painting.*
- Okuda Eizan Gama - *Potters Wheel (Also Tea Ceremony)*
- Kochu-an/Rakunyu Ceramic Studio - *Potters Wheel, Hand Building. Tea Ceremony.*

#### Other Activities

- Rose Golf Club - *Foot Golf, a fun and challenging game of foot golf on a 9 hole golf course.*
- Shigaraki Washi Making (Paper) - *Learn how to make Japanese washi.*
- Kashikichi Funakawa - *Japanese Ichigo Daifuku making activity.*

#### Cafe/ Restaurants/ Deli/ Bakery

- Kirakuya - *Authentic Sanuki Udon, vibrant setting, generous portions, extensive menu.*
- Marupotasha - *Located inside Maruta Touki - quaint cafe with popular dessert treats, good for a rest.*
- Sobadokoro Sankyu - *Popular local soba restaurant near Shigaraki station.*
- Issuian - *Popular restaurant, excellent selection of menu's, seasonal focus.*
- Fleur Cafe - *Popular cafe near Shigaraki Station, Fluffy pancakes speciality.*
- Uosen - *Japanese restaurant, seasonality, lunches and dinners and events can be catered. Groups OK.*
- Noborigama Cafe - *Unique cafe inside heritage listed Noborigama kiln.*
- Kashikichi Funakawa - *Popular refreshment stop, delicious Strawberry Daifuku and Daifuku making lessons.*
- Cafe Awa Isa - *Cute Cafe located in the centre of Shigaraki, great place to rejuvenate during pottery hunting.*
- Cafe and Gallery Touen - *Popular local Japanese Kisatten style cafe, lunches and refreshemnts. timeless.*
- iro+iro Deli and Kitchen - *Popular deli - delicious bento lunches.*
- Ogama - *Popular local Cafe, good place to refresh when doing a pottery exploration.*
- Kochu-an/ Rakunyu Koubo - *Boutique accommodation, semi open air private baths located in pottery studio.*
- Yakume Bakery - *Popular Local Bakery, good selection of freshly baked breads, top rating bakery.*
- Ogawatei - *Popular Ryokan - meals only can be arranged for group lunches. Bookings essential.*
- Furaibou - *Ramen restaurant.*
- Gyuishi - *Omi Beef specialist restaurant. Groups OK.*
- Tanukiya Bunpuku - *Udon Restaurant. Groups Ok. Unique restaurant in the shape of a huge sleeping tanuki.*
- Kochuan/Rakunyu Ceramic Studio - *Tea Ceremony - Tea Kaiseki - reservations only. FIT.*
- Shigaraki Torisue - *Omi Shamo Nabe specialist restaurant (Delicious local chicken).*
- Kama-to no Mori - *Cafe and lunches inside a operational ceramics factory, with extensive gift and homeware store.*
- Kushikatsu Musashi - *Authentic kushikatsu - popular with locals.*
- Donabe Gohan and Cafe Mutsumian - *Extensive menu and focus on cooking with earthenware.*
- Sushi Kappo Kokoro - *Kappo style sushi restaurant.*
- Shokuji Tokoro Eiwa - *Sushi restaurant in the Nagano district.*
- Teppanyaki Tacchan - *Small restaurant, bookings essential.*
- Sakedokoro Masa - *Small and cosy Yakitori restaurant.*
- Shigaraki Saryou Uzukumaru - *Traditional Japanese sweets shop. (Takeout Only)*

#### Accommodation

- Rose Village - *Stunning Cottages with expansive deck and pool area, perfect for several nights in Shigaraki.*
- Ogawatei - *Traditional Ryokan in the center of the Kiln exploration zone of Shigaraki. Tanuki bath incredible.*
- Ogama - *Modern self contained accommodation in a renovated kominka, next to iconic noborigama kiln.*
- Kochu-an/ Rakunyu Koubo - *Boutique accommodation, semi open air private baths located in pottery studio.*
- Keyakinoyado En - *Private, luxurious villa on spacious grounds. Michelin Star rated chef, run of house.*
- Pension Shigaraki - *Quaint lodging located near the Shigaraki Station in a Cherry blossom lined street.*
- Ryouri Ryokan Hiraoka Ya - *A family run Ryokan located near the central kiln exploration zone.*

#### Golf Courses

- Rose Golf Club

<https://ogawa-kenzo.com/>  
<https://www.tanikangama.com/>  
 No website  
<https://www.kamamoto.co.jp/>  
<https://www.instagram.com/churokuen>  
<https://nakakoubou.com/>  
<http://www.eonet.ne.jp/~eizangama/>  
<https://miharugama.com/>  
<https://www.shigaraki-marushi.com/gallery>  
<https://yasubeigama.com/gallery/index.htm>  
<http://www.daikinoutsuwa.com/>

No Website  
<https://www.meizan.info/ogama/>  
<https://miharugama.com>  
<http://tougemura.jp/>  
<http://www.eonet.ne.jp/~rokuro/>  
<https://tokusai.jp>  
<https://ogawa-kenzo.com/>  
<https://minorugama.com/>  
<https://www.shigarakiyaki.co.jp/>  
<http://www.eonet.ne.jp/~eizangama>  
<http://www.kochu-an.com/>

<https://rosevillage.jp/>  
<https://t.ly/aMEVC>  
 No Website

<http://www.kotanito-ki.com/>  
<https://www.instagram.com/marupotasha/>  
<http://www.toyo.co.com/toriatukaisoba3/kakudaikone/newpage250.html>  
<http://tsuian.com/>  
<http://www.fleur-cafe.com/>  
<http://uosen.net/menu/>  
<https://tougemura.jp/cafe/>  
 No website  
 No Website  
<https://shorturl.at/Fi6KK>  
<https://www.instagram.com/iro.toiro/>  
<https://www.meizan.info/ogama/stay>  
<http://www.kochu-an.com/>  
 No website  
<https://www.shigaraki.co.jp/>  
 No website  
<https://www.gyuishi.com/index.html>  
<https://www.bunpuku-tonchinkan.com/>  
<http://www.kochu-an.com/>  
<https://koka-torisue.owst.jp/>  
<https://www.kama-to.jp/>  
<https://kushikatsu-musashi.com/>  
<https://www.mutsumian.jp/>  
 No website  
 No website  
<https://tabelog.com/shiga/A2502/A250202/25001706/>  
<https://tabelog.com/shiga/A2502/A250202/25001705/>  
<http://www.uzukumaru.co.jp/>

<https://rosevillage.jp/>  
<https://www.shigaraki.co.jp/>  
<https://www.meizan.info/ogama/stay>  
<http://www.kochu-an.com/>  
<https://keyaki-en.jp/>  
<http://www.p-shigaraki.com>  
<http://www.biwa.ne.jp/~hiraokay/>

<https://www.rose-golfclub.com/>



## Eda/ Kouyama/ Nishi/ Hosohara Districts - Close to Central Shigaraki

### Galleries

- Yamajo Touki - "Tou Dou Kan" - *Expansive gallery shop surrounded by Tanuki of all sizes.*
- Toumu - *Gallery hosts solo exhibitions of local artisans approximately once a month.*
- Tetsuzan Gama - *Potters Atelier and gallery. Excellent gallery to experience "Wabi Sabi".*
- Kabushiki Gaisha Rian - *The birthplace of the Shigaraki Tanuki and a must for Tanuki figurine lovers.*
- Marujiu Touki Co. Ltd - *Creating a wide variety of tableware and ceramic homeware.*
- Furutani Seitoshio - *Creates a variety of tableware, emphasis on designs that enhance the visual appeal of food.*

<https://www.yamajyou.com/>  
<https://rengetsu.co.jp/>  
<https://www.instagram.com/mt.zacky>  
 No website  
<https://www.O10gama.co.jp/>  
<https://furutani.handcrafted.jp/>

### Cafe/ Restaurants/ Deli/ Bakery

- Sobachaya Ogura - *Jyuwari soba restaurant.*
- Nanapan - *Local bakery.*
- Tacoichi - *Tacoyaki roadside stall inside an repurposed train carriage.*
- Okonomiyaki Sukechan - *Local okonomiyaki restaurant.*
- Niku no Shimokawa - *Butchery restaurant, Yakiniku Restaurant.*
- Pork Restaurant Sora - *Tonkatsu and Buta Shabu.*
- Michikusa Ryori Obana - *Small restaurant serving heartfelt cuisine served on pottery by local Shigaraki artists.*

<https://sobachaya-ogura.com/>  
[https://www.instagram.com/nanapan\\_shigaraki/?hl=ja](https://www.instagram.com/nanapan_shigaraki/?hl=ja)  
[https://www.instagram.com/tacoichi\\_shigaraki/](https://www.instagram.com/tacoichi_shigaraki/)  
<https://okonomiyaki-sukechan.owst.jp>  
 No website  
<https://sora-shigaraki.com/>  
 No website

### Farm Experience

- Yamada Bokujyo - *Operational Dairy Farm - Live farm animal exhibits, BBQ Land, Softserve Ice-cream etc.*

<https://www.no-fu-yamadabokujyou.com/>



## Asamiya/ Sugiyama District - Gateway

### Tea Specialists

- Yamamotoen - *Large scale tea grower and processor, retail facility, cafe and plantation tours.*
- Chanomiyagura - *Large scale tea grower and processor, retail facility.*
- Fujitaen - *Tea specialist and distributor.*
- Katagi Koukaen - *Asamiya's first fully organic tea plantation - tea plantation visits and tea sales.*

<https://www.asamiyacha.com/>  
<https://chanomiyagura.com/>  
<http://fujitaen.com/>  
<http://www.katagikoukaen.com/>

### Other Activities

- Ochame Dream Asamiya - *Tea plantation experience, suitable for international visitors.*

<https://tinyurl.com/bdfaphjx>

### Cafe/Restaurants

- Yamamotoen - *With Tea - Popular cafe, tea themed dessert treats, light meals, local specialities.*
- Chanomiyagura - *Freshly baked roll cakes, created from the best ingredients from their own and tea plantations.*
- Shoraifuku - *Sweet Potato Dessert Treats.*
- Restaurant Yamabiko - *Japanese Restaurant - suitable for FIT and Group visitors.*
- Unagi Wakamatsu - *Japanese Eel Restaurant.*
- Shokujidokoro Asamiya - *Japanese Restaurant (Expansive menu and Wild Boar Hotpot, when in season).*
- Horanoen - *Zensai and Warabimochi and other Japanese sweets.*
- Kurodaen - *Handmade Japanese Soba, located in a stunning traditional Japanese style building.*
- Swiss Alpina - *Japanese Cafe meals, Swiss Fondue restaurant - garden setting.*
- Soba Ichinose - *Hand Made Soba restaurant.*
- Pizza Restaurant Girasole - *Local Pizza Restaurant.*

<https://www.asamiyacha.com/>  
<https://chanomiyagura.com/>  
[https://www.instagram.com/shou\\_raifuku/](https://www.instagram.com/shou_raifuku/)  
<https://www.r-yamabiko.jp/>  
<https://www.instagram.com/wakamatsu726>  
<https://www.botannabe-asamiya.com/contact>  
 No website  
<https://kurodaen-shigaraki.com/>  
<https://www.instagram.com/garden.cafe.alpina/>  
[https://www.instagram.com/soba\\_ichinose/](https://www.instagram.com/soba_ichinose/)  
[https://www.instagram.com/girasole\\_asamiya?igshid=YmMyMTA2M2Y%3D](https://www.instagram.com/girasole_asamiya?igshid=YmMyMTA2M2Y%3D)

### Accommodation

- Minpaku Nanbu - *Popular minshuku accomodation in delightful rural setting, between Shigaraki and Asamiya.*

<https://stayjapan.com/area/shiga/koka/pr/13773>

### Golf Courses

- Asamiya Golf Course
- Shiga Country Club

<https://reserve.accordiagolf.com/golfCourse/shiga/asamiya/>  
<https://www.shigacc.jp/>



## Tarao District - Gateway District

### Accommodation

- Hotel Lake Villa - *Popular Hotel and Cottages on the Tarao Golf Course.*
- Tarao no ie - *Renovated Japanese Kominka Stay. excellent immersion experience, great for self drive visitors.*
- Shigaraki no Sato House - *Igloo Style accomodation within the Daily Shigaraki Country Club grounds.*

<http://www.lakevilla.co.jp/>  
<http://taoaoie.com/>  
<https://www.d-shigaraki.co.jp/guide/lodging/>

### Golf Courses

- Tarao Country Club
- Daily Shigaraki Country Club

<https://www.tarao.co.jp/>  
<https://www.d-shigaraki.co.jp/>







# Shigaraki Festivals

## Shigaraki Fire Festival

This festival is held annually on the fourth Saturday of July in Koka City, Shiga Prefecture. It is a tradition that dates back to the Edo period, and its purpose is to express gratitude for "fire," which is essential in pottery and daily life, and to pray for safety.

### Details and Location

**Date:** Fourth Saturday of July

**Time:** 15:00 – 21:30

**Venue:** Atago-yama Toki Shrine, Shigaraki Ichinomiya Shrine, Koka City Shigaraki Regional Community Center

### Schedule:

**15:00 – 17:00:** Registration for torch offerings

*(No prior reservation; on-the-day registration only)*

**19:00:** Fire-lighting Ceremony (Shigaraki Ichinomiya Shrine)

**19:25:** Opening Ceremony

*(Explanation of start and end points at the Shigaraki Regional Community Center parking lot)*

**19:45:** Torch offerings and drum performance

**21:05:** Fireworks offering and display (Approximately 30 minutes)

**Admission:** Free

**Organizer:** Shigaraki Festival Executive Committee

**Contact:** Shigaraki Festival Executive Committee Fire Festival Office

*(Located within the Koka City Chamber of Commerce Shigaraki Branch)*

**Address:** 1203 Nagano, Shigaraki-cho, Koka City, Shiga Prefecture 529-1892

**Tel:** 0748-82-0873

**Fax:** 0748-82-3117

**Business Hours:** 9:00 – 17:00 (Monday – Friday)

**Website:** <https://www.e-shigaraki.org/himatsuri/>



## Pottery Festival and Events

In Shigaraki, throughout the year, artisans and potters showcase their works at various events. Visitors can enjoy the pleasure of searching for unique ceramics amidst a lively, market-like atmosphere.

### Shigaraki Sakaichi (Artists Market)

The "Shigaraki Artists' Market" is a popular event with a long tradition, held annually for four days in May. Participating ceramic artists set up booths to display and sell their works directly. This event takes place at the Shigaraki Ceramic Cultural Park - Sun Plaza and attracts not only ceramic artists but also artists working in wood, glass, leather, and fashion. The event features a workshop trail where visitors can experience professional techniques, and there is also a food area offering unique dishes.

### Details and Location

**Date:** May 2nd – May 5th (annually)

**Time:** 9:00 – 17:00

**Venue:** Shigaraki Ceramic Cultural Park - Sun Plaza

**Website:** <https://www.shigaraki-sakkaichi.com/>

### Shigaraki Pottery Festival

The Shigaraki Pottery Festival is a hybrid-style event held in tents set up in galleries and the Shigaraki Pottery Wholesale Cooperative parking lot. During the event, distinctive "Shigaraki Pottery Festival" banners are displayed, making it easy to identify participating galleries and stores. The latest information is updated on the Shigaraki Pottery Festival website. The event features special discounts, gifts, and a stamp rally with opportunities to win exclusive prizes unique to the pottery festival.

### Details and Location

**Date:** October 7th – October 15th (annually)

**Time:** 9:00 – 17:00

**Venue:** Galleries, stores, Shigaraki Pottery Wholesale Cooperative parking lot

**Website:** <https://shigaraki-matsuri.org/>







Discover  
**信楽**  
 SHIGARAKI  
 JAPAN  
[www.e-shigaraki.org](http://www.e-shigaraki.org)

**SHIGARAKI TOURISM ASSOCIATION**

E-mail: [info@e-shigaraki.org](mailto:info@e-shigaraki.org)

**Postcode:** 529-1851

1203 Nagano Shigaraki Town Koka City Shiga Prefecture Japan.  
*(Inside - Shigaraki Traditional Industries Hall)*

**Tel:** 0748-82-2345

**Fax:** 0748-82-2551



This Travel Professional Guide is Published in March 2024 Document and has been created by Shigaraki Tourism Association.

All information is current as at March 2024, however is subject to change.

Contact Shigaraki Tourism Association for further information and for updates.